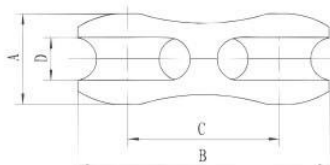




8-Shape Bend Resistance Connector

Item number	Model	Main size (mm)				Rated load(kN)	Weight (kg)
		A	B	C	D		
17101	SL8-3	32	94	60	15	30	0.3
17102	SL8-5	42	116	70	18	50	0.8
17103	SL8-8	50	141	85	24	80	1.5

Uses: To connect pilot rope lengths or pulling rope lengths and to pass over the puller or Tensioner bull wheels.

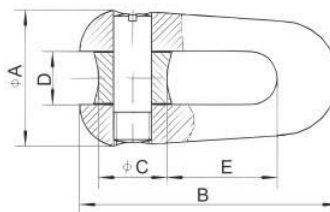


Fixed Joints

Item number	Model	Main size(mm)						Rated Load (kN)	Weight (kg)
		A	B	C	d	D	E		
17111	SLU-1	36	68	18	10	14	29	10	0.2
17112	SLU-3	37	76	20	12	17	31	30	0.22
17113	SLU-5	50	96	23	18	19	42	50	0.6
17114	SLU-8	56	110	28	20	22	50	80	0.8
17115	SLU-10	59	126	30	22	26	54	100	1.2
17116	SLU-13	61	134	32	24	27	56	130	1.3
17117	SLU-15	63	138	37	27	28	58	150	1.4
17118	SLU-25	80	178	44	30	35	72	250	3.0
17118A	SLU-28	80	178	44	30	35	72	280	3.0
17119	SLU-32	85	186	42	30	38	80	320	3.9

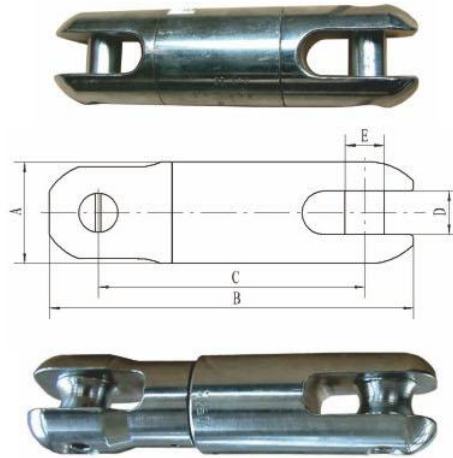
Uses: To connect pilot rope lengths or pulling rope lengths and to pass over the puller or tensioner bull wheels.

Notes: "d" refers to the diameter of pin



Swivel Joints

Item number	Model	Main size (mm)					Rated load(kN)	Weight (kg)
		A	B	C	D	E		
17121	SLX-0.5	19	61	40	8	9	5	0.2
17122	SLX-1	30	100	70	12	13	10	0.4
17123	SLX-2	35	120	90	14	14	20	0.55
17124	SLX-3	37	129	95	16	16	30	0.65
17125	SLX-5	42	154	116	18	17	50	1.5
17125A	SLX-6.5	51	185	140	20	19	65	2.0
17126	SLX-8	57	220	165	24	22	80	2.4
17126Y	SL80Y	57	207	152	24	20	80	2.4
17127	SL130	62	248	192	26	24	130	3.5
17128	SL180	75	294	222	26	26	180	7.2
17129	SL250	85	331	251	30	30	250	10.6
17130	SL250Y	80	323	243	30	30	250	8.0
17130A	SL320	85	346	264	38	30	320	9.7
17130D	SL400	100	383	293	43	33	400	17

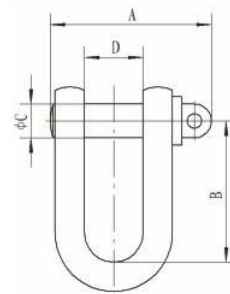


Uses: To connect the pulling rope to the mesh sock joint mounted on the conductor, they are designed to avoid torsion strain accumulation.

Notes: 1. Model with "Y" are rocking head type, rocking angle $\leq 6^\circ$
2. Not allow to pass over the bull wheels and turning block

High Strength Shackle

Item number	Model	Main size (mm)				Rated load(kN)	Weight (kg)
		A	B	C	D		
17131	GXK-1	55	42	12	20	10	0.15
17132	GXK-2	67	58	16	24	20	0.29
17133	GXK-3	97	82	20	34	30	0.8
17133A	GXK-3A	97	112	20	34	30	0.9
17134	GXK-5	107	89	22	38	50	1.12
17134A	GXK-5A	107	131	22	38	50	1.29
17135	GXK-8	128	97	30	45	80	2.4
17136	GXK-10	141	114	34	48	100	3.56
17137	GXK-16	152.5	139	37	54	160	4.8
17138	GXK-20	164	140	39	60	200	5.17
17139	GXK-30	186	146	50	68	300	7.5



Uses: They are the primary connecting link in all manner of rigging systems, from boats and ships to industrial crane rigging, as they allow different rigging subsets to be connected or disconnected quickly



Mesh Sock Joints

Item number		Model	Applicable conductor	Load(kN)	
Single head	Double head			Rated	Breaking
17161		SLW-1.5	ACSR70-95	15	30
17162	17182	SLW(S)-2	ACSR120-150	20	40
17163	17183	SLW(S)-2.5	ACSR185-240	25	50
17164	17184	SLW(S)-3	ACSR300-400	30	60
17165	17185	SLW(S)-4	ACSR500-630	40	80
17166	17186	SLW(S)-5	ACSR720	50	125
17167	17187	SLW(S)-7	ACSR900	70	175
17168	17188	SLW(S)-8	ACSR1000-1120	80	200

Uses: To connect and grip various steel core Aluminium stranded wires in releasing wires and can pass through various releasing wire block and tensioning wheel.



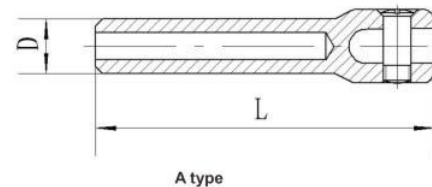
Model YGJ Steel Wire Connector

Item number	Model	Rated load (kN)	Main dimension (mm)		Applicable steel stranded
			D	L	
17191	YGJ135	15	16	157	GJ35
17192	YGJ150	20	18	168	GJ50
17193	YGJ170	25	22	195	GJ70
17194	YGJ180	25	24	195	GJ80
17195	YGJ100	30	26	223	GJ100
17196	YGJ120	40	28	249	GJ120
17197	YGJ135	50	32	261	GJ135
17198	YGJ150	60	32	310	GJ150
17199	YGJ170	60	34	330	GJ170
17199F	YGJ180	60	34	340	GJ180
17199G	YGJ210	60	36	350	GJ210
17199H	YGJ240	60	36	350	GJ240

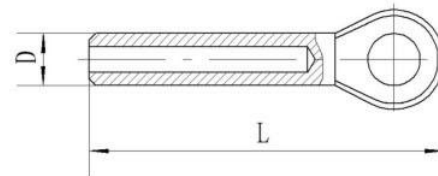
Uses: Suitable for earth wire construction (including OPGW)

Notes: 1. Please note "A" or "B" while purchasing.

2. Choose the hexagonal die base on the D dimension



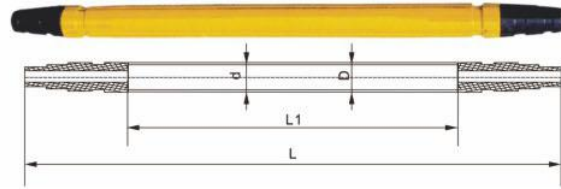
A type



B type

Splicing Sleeve Protector (ACSR)

Item number	Model	Main size (mm)				Applicable conductor
		D	L	d	L1	
17201	J240B	Φ45	850	Φ38	530	ACSR240/55
17202	J300B	Φ51	940	Φ43	600	ACSR300/50
17203	J400B	Φ57	995	Φ47	655	ACSR400/50
17204	J500B	Φ68	1080	Φ56	740	ACSR500/65
17205	J630B	Φ83	1180	Φ63	800	ACSR630/55
17206	J720B	Φ83	1196	Φ63	816	ACSR720/50
17207	J900B	Φ89	1180	Φ73	800	ACSR900/75
17208	J1000B	Φ95	1400	Φ75	1020	ACSR1000/80



Feature: For line stringing and cable pulling, they are designed to avoid torsion strain accumulation.

Notes :

- 1.Applicable for DL/T758-2001 as stated splicing sleeves.
- 2.Please writing the dimension of splice in contract if the splicing sleeve differ from standard .

Splicing Sleeves Protector(Earth Wire)

Item number	Model	Main size (mm)				Applicable conductor
		D	L	d	L1	
17213	J55G	Φ30	450	Φ24	280	GJ50,GJ55
17214	J70G	Φ30	510	Φ24	340	JLB65,GJ70
17215	J80G	Φ34	510	Φ27	340	GJ80
17216	J95G	Φ34	585	Φ27	415	JLB95
17217	J100G	Φ38	590	Φ28	390	ACSR50/30,GJ100
17218	J120G	Φ40	660	Φ30	440	GJ120,JLB120
17219	J150G	Φ45	850	Φ37	530	GJ150.ACSR70/40,ACSR95/55

Notes: Other specification can be customized



Splicing Sleeves Straightener

Item number	17211	17212	17212A
Model	YJZ2	YJZ3	YJZ4
Maximum straighten force(kN)	20	50	150
Maximum applicable conductor	ACSR720	ACSR900	ACSR1250
Maximum diameter of splicing sleeves(mm)	Φ60	Φ68	Φ80
Dimension(mm)	300×260×507	452×391×145	400×375×140
Weight(kg)	12	13.5	15.5

Notes:Need to purchase matched manual pump CSB63 for 17212



Head Boards for Two Bundle Conductors

Item number	Model	Rated load (kN)	Applicable stringing block sheave width(mm)	Weight (kg)	Feature
17220	SZ2-8	80	75	17	Independent
17221	SZ2-8A		100	19	
17222	SZ2-8B		110	19.5	
17223	SZ2A-8	80	100	90	Poising sheave
17223T	SZ2A-8T		110	100	
17224	SZ2B-13	130	110	55	Independent
17225	SZ2C-13	130	110	50	
17226	SZ2B-18	180	125	90	

Notes:Can be customized according to the specification of other stringing blocks.



SZ2



SZ2B



SZ2A



SZ2C

Head Boards for Three Bundle Conductor(Balancing Type)

Item number	Model	Rated load (kN)	Applicable stringing block sheave width(mm)	Weight (kg)	Steel rope length (m)
17228	SZ3A-10	100	100	114	1x30+1x15
17229	SZ3A-13	130	110	130	1x30+1x15
17230	SZ3A-18	180	110	142	1x30+1x15

Feature:they are designed to avoid torsion strain accumulation during line stringing

Notes:Can be customized according to the specification of other stringing blocks.



Head Boards for Four Bundle Conductors

Item number	Model	Rated load (kN)	Applicable stringing block sheave width(mm)	Weight (kg)	Feature
17231	SZ4A-13	130	100	139	Poising sheave
17232	SZ4B-13	130	100	82	Independent
17233	SZ4B-18	180	110	95	Independent
17234	SZ4B-25	250	110	105	Independent
17239	SZ4B-32	320	125	150	Independent

Notes:Can be customized according to the specification of other stringing blocks.



SZ4A



SZ4B



Head Boards for Four Bundle Conductors

Item number	Model	Rated load (kN)	Applicable stringing block sheave width(mm)	Weight (kg)	Feature
17241	SZ6B-25	250	110	132	Independent
17242	SZ6B-25A	250	100	124	Independent
17246	SZ8B-28	280	110	240	Independent

Notes:Can be customized according to the specification of other stringing blocks.



Inspection Trolleys and Overhead Lines Bicycles for Single Conductor

Item number	Model	Rate load (kN)	Diameter of wheel (mm)	Maximum through diameter (mm)	Weight (kg)
17261	SFD1A	1	Φ55	Φ25	7
17262	SFD1B	1	Φ80	Φ40	7
17264	SFD3	1	Φ160	Φ40	34

Uses:To install accessories and inspection on single conductor . SFD1A is used for telecommunications cable.



Inspection Trolleys and Overhead Lines Bicycles for Two Bundle Conductors

Item number	Model	Rated load (kN)	Maximum through diameter (mm)	Conductor distance (mm)	Weight (kg)	Remark
17251	SFS2	1	Φ40	400	34	Horizontal
				450	36	
				500	38	
17253	SFS400	1	Φ40	400	40	Vertical
17255	FC400/450S	1	Φ60	400 ~ 450	34	Horizontal
17256	SFS1-400	1.5	Φ70	400	38	Horizontal
17257	SFS1-450	1.5	Φ70	450	40	Horizontal

Uses: To mount accessories and to overhaul.

Notes: Should confirm the distance between conductors before proceeding production



Inspection Trolleys for Three Bundle Conductors

Item number	Model	Rated load (kN)	Maximum through diameter (mm)	Conductor distance (mm)	Weight (kg)
17268A	SFT400A	1.5	Φ60	400	36
17268B	SFT400B	1.5	Φ60	457	36
17268C	SFT500	1.5	Φ60	500	36





Inspection Trolleys and Overhead Lines Bicycles for Four Bundle Conductors

Item number	Model	Rated load (kN)	Maximum through diameter (mm)	Conductor distance (mm)	Weight (kg)
17271	SFS1	1.5	Φ70	450	40
				500	
17272	SFS3	1	Φ40	400	36
				450	38
				500	40
17273	FSC400/450	1	Φ60	400 ~ 450	43.5

Uses:To mount accessories and overhaul on four conductor and so on.

Notes:Please explain clearly in writing the distance between conductors



Motorised Inspection Trolley for Eight Bundle Conductors

Item number:17275

Max Load(kg):300

Speed(m/min):0~30

Grade ability degrees(°):≤18

Maximum through diameter(mm):Φ68

Gasoline engine(hp/rpm):5.5/1800

Conductor distance(mm):Φ1045mm uniformly distributed 8-bundled conductors

Weight(kg):395

Uses:to mount accessories and overhaul on 1000kv conductor installation

Feature:1. Driven by gasoline engine and hydraulic system

2. It's easy to use with suspension clamp and conductor spacer

3. High driving force

4. With reliable multi-plate brake

5. Mechanical ranging

