

Aluminum Alloy Inner-Suspended Tubular Gin Pole

Item number	Model	Length (m)	Allowable axial Direction load(kN)	Cross section (mm)	Weight (kg/m)
03101	LBNXG120-9	9	9	φ120	7.5
03102	LBNXG120-10.5	10.5	6		
03111	LBNXG150-9	9	15	φ150	8
03112	LBNXG150-10.5	10.5	11		

Uses:To assemble and erect the tower and pole in transmission and distribution construction.

Notes:

- 1.Use high strength aluminum alloy tube as main materials,steel parts are galvanized.
- 2.Including 2 sets waist loop
- 3.The safety factor is 2.5



Aluminum Alloy Tower-Mounted Tubular Small Gin Pole

Item number	Model	Length (m)	Allowable axial Direction load(kN)	Cross section (mm)	Weight (kg/m)
03171	LBGT100-5	5	14	φ100	5.5
03172	LBGT100-6	6	11		
03181	LBGT120-4.5	4.5	35	φ120	7.5
03182	LBGT120-5	5	26		
03183	LBGT120-6	6	18		
03184	LBGT120-7	7	14.5		
03191	LBGT150-6	6	31	φ150	8
03192	LBGT150-7	7	22		
03193	LBGT150-8	8	16		

Uses:To assemble and erect the tower in transmission and distribution construction.

Notes:

- 1.Use high strength aluminum alloy tube as main materials,steel parts are galvanized.
- 2.Have to purchase small gin pole support(#03201,#03202)
- 3.The safety factor is 2.5



Small Gin Pole Support

Item number	03201	03202
Model	JT130	JT200
Applicable maximum frame girder	∠125	∠200
Rated load(kN)	20	20
Weight(kg)	15	25

Notes:

- 1.Steel parts are galvanized.
- 2.The safety factor is 3.





Aluminum Alloy Inner-Suspended Lattice Gin Pole

Item number	Model	Length (m)	Allowable axial load (kN)	Cross section (mm)	Weight (kg/m)	Remarks
03119	LBNX250-8	8	37	□250	10.5	Single pulley, 2sets waist loop
03120	LBNX250-9	9	29			
03121	LBNX250-10	10	23			
03122	LBNX250-11	11	19			
03123	LBNX250-12	12	16			
03124	LBNX250-13	13	13			
03125	LBNX250-14	14	11			
03126	LBNX250-15	15	10			
03131	LBNX300-11	11	29	□300	11	Double pulley, 2sets waist loop
03132	LBNX300-12	12	24			
03133	LBNX300-13	13	22			
03134	LBNX300-14	14	18			
03135	LBNX300-15	15	16			
03136	LBNX300-16	16	13			
03137	LBNX300-17	17	12			
03138	LBNX300-18	18	11			
03141	LBNX350-11	11	40	□350	13.5	Double pulley, 2sets waist loop
03142	LBNX350-12	12	33			
03143	LBNX350-13	13	30			
03144	LBNX350-14	14	24			
03145	LBNX350-15	15	21			
03146	LBNX350-16	16	19			
03147	LBNX350-17	17	17			
03148	LBNX350-18	18	15			
03151	LBNX400-12	12	43	□400	14.6	Double pulley, 2sets waist loop
03152	LBNX400-13	13	38			
03153	LBNX400-14	14	32			
03154	LBNX400-15	15	28			
03155	LBNX400-16	16	25			
03156	LBNX400-17	17	22			
03157	LBNX400-18	18	19			
03158	LBNX400-19	19	16			
03159	LBNX400-20	20	14			



Uses: To assemble and erect the tower and pole in transmission and distribution construction.

Notes:

- 1.Use high strength angle aluminum alloy as main materials,steel parts are galvanized.
- 2.Including 2 sets waist loop
- 3.The safety factor is 2.5

Aluminum Alloy Inner-Suspended Lattice Gin Pole

Item number	Model	Length (m)	Allowable axial load (kN)	Cross section (mm)	Weight (kg/m)	Remarks
03511	LBNX500-14A	14	75	□500	18	Double pulley, 2sets waist loop
03512	LBNX500-15A	15	70			
03513	LBNX500-16A	16	64			
03514	LBNX500-17A	17	57			
03515	LBNX500-18A	18	50			
03516	LBNX500-19A	19	45			
03517	LBNX500-20A	20	41			
03518	LBNX500-21A	21	37			
03519	LBNX500-22A	22	34			
03521	LBNX500-17B	17	88	□500	22	Double pulley, 2sets waist loop, strengthened type
03522	LBNX500-18B	18	77			
03523	LBNX500-19B	19	70			
03524	LBNX500-20B	20	65			
03525	LBNX500-21B	21	60			
03526	LBNX500-22B	22	56			
03527	LBNX500-23B	23	52			
03528	LBNX500-24B	24	47			
03529	LBNX500-25B	25	42			
03531	LBNX600-17A	17	75	□600	20	Double pulley, 2sets waist loop
03532	LBNX600-18A	18	70			
03533	LBNX600-19A	19	65			
03534	LBNX600-20A	20	60			
03535	LBNX600-21A	21	55			
03536	LBNX600-22A	22	49			
03537	LBNX600-23A	23	45			
03538	LBNX600-24A	24	41			
03539	LBNX600-25A	25	38			
03541	LBNX600-17B	17	119	□600	24	Double pulley, 2sets waist loop, strengthened type
03542	LBNX600-18B	18	111			
03543	LBNX600-19B	19	104			
03544	LBNX600-20B	20	94			
03545	LBNX600-21B	21	85			
03546	LBNX600-22B	22	76			
03547	LBNX600-23B	23	70			
03548	LBNX600-24B	24	64			
03549	LBNX600-25B	25	58			



Uses: To assemble and erect the tower and pole in transmission and distribution construction.

Notes:

1. Use high strength angle aluminum alloy as main materials, steel parts are galvanized.
2. The safety factor is 2.5
3. Model whose postfix "A" means it is universal and "B" means strengthened



Aluminum Alloy Lattice Single Gin Pole

Item number	Model	Length(m)	Allowable axial load(kN)	Cross section(mm)	Weight(kg/m)
03211	LBD250-8	8	37	□250	10.5
03212	LBD250-9	9	29		
03213	LBD250-10	10	23		
03214	LBD250-11	11	19		
03215	LBD250-12	12	16		
03216	LBD250-13	13	13		
03217	LBD250-14	14	11		
03218	LBD250-15	15	10		
03221	LBD300-10	10	35	□300	11
03222	LBD300-11	11	30		
03223	LBD300-12	12	24		
03224	LBD300-13	13	22		
03225	LBD300-14	14	18		
03226	LBD300-15	15	16		
03227	LBD300-16	16	13		
03231	LBD350-11	11	40	□350	13.5
03232	LBD350-12	12	33		
03233	LBD350-13	13	30		
03234	LBD350-14	14	24		
03235	LBD350-15	15	22		
03236	LBD350-16	16	19		
03237	LBD350-17	17	17		
03238	LBD350-18	18	15		
03241	LBD400-12A	12	43	□400	14.6
03242	LBD400-13A	13	38		
03243	LBD400-14A	14	32		
03244	LBD400-15A	15	28		
03245	LBD400-16A	16	25		
03246	LBD400-17A	17	22		
03247	LBD400-18A	18	19		
03248	LBD400-19A	19	16		
03249	LBD400-20A	20	14		
03251	LBD400-12B	12	65	□400	16.5
03252	LBD400-13B	13	57		
03253	LBD400-14B	14	50		
03254	LBD400-15B	15	44		
03255	LBD400-16B	16	38		
03256	LBD400-17B	17	35		
02357	LBD400-18B	18	30		
02358	LBD400-19B	19	26		
03259	LBD400-20B	20	23		



Uses: To assemble and erect the tower and pole in transmission and distribution construction.

Notes: 1. Use high strength angle aluminum alloy as main materials, steel parts are galvanized.

2. The safety factor is 2.5

3. Model whose postfix "A" means it is universal and "B" means strengthened

Aluminum Alloy Lattice Single Gin Pole

Item number	Model	Length(m)	Allowable axial load (kN)	Cross section (mm)	Weight (kg/m)
03261	LBD500-14A	14	75	□500	18
03262	LBD500-15A	15	70		
03263	LBD500-16A	16	64		
03264	LBD500-17A	17	57		
03265	LBD500-18A	18	50		
03266	LBD500-19A	19	45		
03267	LBD500-20A	20	41		
03271	LBD500-14B	14	120	□500	22
03272	LBD500-15B	15	110		
03273	LBD500-16B	16	100		
03274	LBD500-17B	17	88		
03275	LBD500-18B	18	77		
03276	LBD500-19B	19	70		
03277	LBD500-20B	20	65		
03281	LBD600-15A	15	87	□600	20
03282	LBD600-16A	16	81		
03283	LBD600-17A	17	75		
03284	LBD600-18A	18	70		
03285	LBD600-19A	19	65		
03286	LBD600-20A	20	60		
03287	LBD600-21A	21	55		
03288	LBD600-22A	22	49		
03291	LBD600-15B	15	140	□600	24
03292	LBD600-16B	16	128		
03293	LBD600-17B	17	119		
03294	LBD600-18B	18	111		
03295	LBD600-19B	19	104		
03296	LBD600-20B	20	94		
03297	LBD600-21B	21	85		
03298	LBD600-22B	22	76		



Uses: To assemble and erect the tower and pole in transmission and distribution construction.

Notes: 1. Use high strength angle aluminum alloy as main materials, steel parts are galvanized.

2. The safety factor is 2.5

3. Model whose postfix "A" means it is universal and "B" means strengthened





Aluminum Alloy A-Shape Tubular Gin Pole

Item number	Model	Length (m)	Basestroke (m)	allowable vertical load (kN)	Cross section(mm)	Weight (kg/m)
03301	LBGR100A-6	6	2.1	18	φ100	5.5
03302	LBGR100A-7	7	2.4	13		
03303	LBGR100A-8	8	2.8	10		
03311	LBGR120A-6	6	2.1	30	φ120	7.5
03312	LBGR120A-7	7	2.4	26		
03313	LBGR120A-8	8	2.8	21		
03314	LBGR120A-9	9	3.1	17	φ150	8
03321	LBGR150A-8	8	2.8	31		
03322	LBGR150A-9	9	3.1	28		
03323	LBGR150A-10	10	3.5	24		
03324	LBGR150A-11	11	3.8	20		
03325	LBGR150A-12	12	4.2	16		
03326	LBGR150A-13	13	4.5	13		



Uses: To set up a small gin pole as a whole or hoist commonly heavy components

Notes: 1. Use high strength aluminum alloy tube as main materials, steel parts are galvanized.

2. Two kinds of head are optional: "upending style", "fixed style", please specify when placing orders.

3. The safety factor is 2.5



Upending style



Fixed style

Aluminum Alloy Tubular A-Shape Gin Pole with Manual Winch

Item number	Model	Base stroke(m)/ Allowable vertical load(kN)	Hoisting with manual winch			Weight (kg/m)	
			Maximum length(m)	Maximum weight(kg)			
				Hoisting directly	Using bi-pulley	Using tri-pulley	
03331	LBGR100J-6	2.1/18	9		600	720	5.5
03332	LBGR100J-7	2.4/13	11		550	700	
03341	LBGR120J-6	2.1/30	9	550	1050	1280	7.5
03342	LBGR120J-7	2.4/26	11	550	870	1040	
03343	LBGR120J-8	2.8/21	13		700	840	8
03351	LBGR150J-8	2.8/31	13	550	1100	1500	
03352	LBGR150J-9	3.1/28	15	550	1100	1500	
03353	LBGR150J-10	3.5/24	17	550	1050	1280	
03354	LBGR150J-11	3.8/20	19	550	980	1160	



Uses: For small pole erection in line construction;

Notes: 1. The maximum output force of the manual winch is 5 kN

2. Use high strength aluminum alloy tube as main materials, steel parts are galvanized.

3. Fixed style head part mounted with tri-pulley

4. The safety factor is 2.5

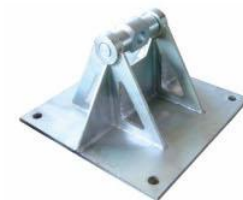
5. Recommend using 7mm steel wire rope, the workable length is 9 times the length of the gin pole

6. Recommend using iron hoisting block (#11203, hook type)



Aluminum Alloy A-Shape Lattice Gin Pole

Item number	Model	Length (m)	Base stroke (m)	Allowable vertical load(kN)	Cross section (mm)	Weight (kg/m)
03361	LBR250-8	8	2.8	72	□250	10.5
03362	LBR250-9	9	3.1	56		
03363	LBR250-10	10	3.5	45		
03364	LBR250-11	11	3.8	38		
03365	LBR250-12	12	4.2	32		
03366	LBR250-13	13	4.5	27		
03371	LBR300-8	8	2.8	100	□300	11
03372	LBR300-9	9	3.1	87		
03373	LBR300-10	10	3.5	70		
03374	LBR300-11	11	3.8	56		
03375	LBR300-12	12	4.2	47		
03376	LBR300-13	13	4.5	40		
03377	LBR300-14	14	4.9	35		
03378	LBR300-15	15	5.2	31		
03379	LBR300-16	16	5.6	26	□350	13.5
03381	LBR350-8	8	2.8	120		
03382	LBR350-9	9	3.1	105		
03383	LBR350-10	10	3.5	94		
03384	LBR350-11	11	3.8	78		
03385	LBR350-12	12	4.2	65		
03386	LBR350-13	13	4.5	58		
03387	LBR350-14	14	4.9	46		
03388	LBR350-15	15	5.2	42		
03389	LBR350-16	16	5.6	37	□400	14.5
03391	LBR400-11A	11	3.8	98		
03392	LBR400-12A	12	4.2	85		
03393	LBR400-13A	13	4.5	75		
03394	LBR400-14A	14	4.9	64		
03395	LBR400-15A	15	5.2	56		
03396	LBR400-16A	16	5.6	48		
03397	LBR400-17A	17	5.9	44		
03398	LBR400-18A	18	6.3	38	□400	16.5
03401	LBR400-11B	11	3.8	147		
03402	LBR400-12B	12	4.2	129		
03403	LBR400-13B	13	4.5	113		
03404	LBR400-14B	14	4.9	98		
03405	LBR400-15B	15	5.2	86		
03406	LBR400-16B	16	5.6	75		
03407	LBR400-17B	17	5.9	69		
03408	LBR400-18B	18	6.3	60		



Uses: To assemble and erect the tower and pole in transmission and distribution construction;

Notes: 1. Two kinds of head are optional: "upending style", "fixed style", please specify when placing orders.

2. The base of cross section 300,350 and 400A gin pole are half-round, the others are quadrate.

3. Use high strength angle aluminum alloy as main materials, steel parts are galvanized.

4. The safety factor is 2.5

5. Model whose postfix "A" means it is universal and "B" means strengthened



Aluminum Alloy A-shape Lattice Gin Pole

Item number	Model	Length (m)	Base stroke (m)	Allowable vertical load(kN)	Cross section (mm)	Weight (kg/m)
03411	LBR500-13A	13	4.5	162	□500	18
03412	LBR500-14A	14	4.9	148		
03413	LBR500-15A	15	5.2	136		
03414	LBR500-16A	16	5.6	125		
03415	LBR500-17A	17	5.9	112		
03416	LBR500-18A	18	6.3	98		
03417	LBR500-19A	19	6.6	88		
03418	LBR500-20A	20	6.9	81		
03421	LBR500-13B	13	4.5	256	□500	22
03422	LBR500-14B	14	4.9	234		
03423	LBR500-15B	15	5.2	215		
03424	LBR500-16B	16	5.6	196		
03425	LBR500-17B	17	5.9	173		
03426	LBR500-18B	18	6.3	151		
03427	LBR500-19B	19	6.6	138		
03428	LBR500-20B	20	6.9	127		
03431	LBR600-15A	15	5.2	171	□600	20
03432	LBR600-16A	16	5.6	160		
03433	LBR600-17A	17	5.9	148		
03434	LBR600-18A	18	6.3	138		
03435	LBR600-19A	19	6.6	130		
03436	LBR600-20A	20	6.9	120		
03437	LBR600-21A	21	7.3	108		
03438	LBR600-22A	22	7.6	96		
03441	LBR600-15B	15	5.2	275	□600	24
03442	LBR600-16B	16	5.6	252		
03443	LBR600-17B	17	5.9	234		
03444	LBR600-18B	18	6.3	219		
03445	LBR600-19B	19	6.6	204		
03446	LBR600-20B	20	6.9	186		
03447	LBR600-21B	21	7.3	168		
03448	LBR600-22B	22	7.6	150		



Uses: To assemble and erect the tower and pole in transmission and distribution construction.

Notes:

1. Two kinds of head are optional : "upending style", "fixed style", please specify when placing orders.
2. Use high strength angle aluminum alloy as main materials, steel parts are galvanized.
3. The safety factor is 2.5
4. Model whose postfix "A" means it is universal and "B" means strengthened

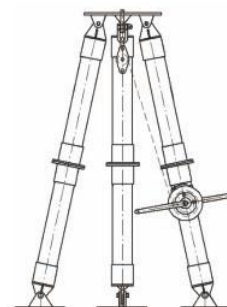
Aluminum Alloy Tubular Tripod Gin Pole With Manual Winch

Item number	Model	Length(m)	Base stroke(m)	Allowable vertical load(kN)	Cross section(mm)	Weight(kg/m)
03451	LBGS120-7	7	4	30	φ120	8
03452	LBGS120-9	9	4.8	22	φ120	8

Uses : For small pole erection in line construction

Notes:

1. The maximum output force of the manual winch is 5 kN
2. Use high strength aluminum alloy tube as main materials, steel parts are galvanized.
3. The safety factor is 2.5



Steel Inner-Suspended Gin Pole

Item number	Cross section(mm)	Length (m)	Allowable axial load (kN)	Main materials	Auxiliary materials	Remarks
03601-10	□300	10	39	50×50×5	30×30×3	Main materials:Q235 Auxiliary materials:Q235
03601-12		12	27			
03601-13		13	23			
03601-15		15	17.5			
03602-12	□400	12	51	50×50×5	30×30×3	Main materials:Q345 Auxiliary materials:Q235
03602-13		13	44			
03602-16		16	29			
03602B-13		13	70			
03602B-16	16	57.5				
03602B-18	18	45				
03602B-20	20	37				
03603-16	□500	16	93	63×63×5	40×40×4	Main materials:Q345 Auxiliary materials:Q235
03603-18		18	73.5			
03603-20		20	59.5			
03603-22		22	49.5			
03603-24		24	41.5	70×70×6	40×40×4	Main materials:Q345 Auxiliary materials:Q235
03603B-16		16	149			
03603B-20		20	95.5			
03603B-24		24	66.5			
03603B-28	28	48.5				
03604-16	□600	16	221	70×70×6	40×40×4	Main materials:Q345 Auxiliary materials:Q235
03604-20		20	141.5			
03604-24		24	98			
03604-28		28	72			
03605-20	□700	20	294	80×80×6	40×40×4	Main materials:Q345 Auxiliary materials:Q235
03605-24		24	204			
03605-28		28	150			
03605-32		32	115			
03606-24	□800	24	249	80×80×7	50×50×4	Main materials:Q345 Auxiliary materials:Q235
03606-28		28	227			
03606-32		32	174			
03606-36		36	137.5			

